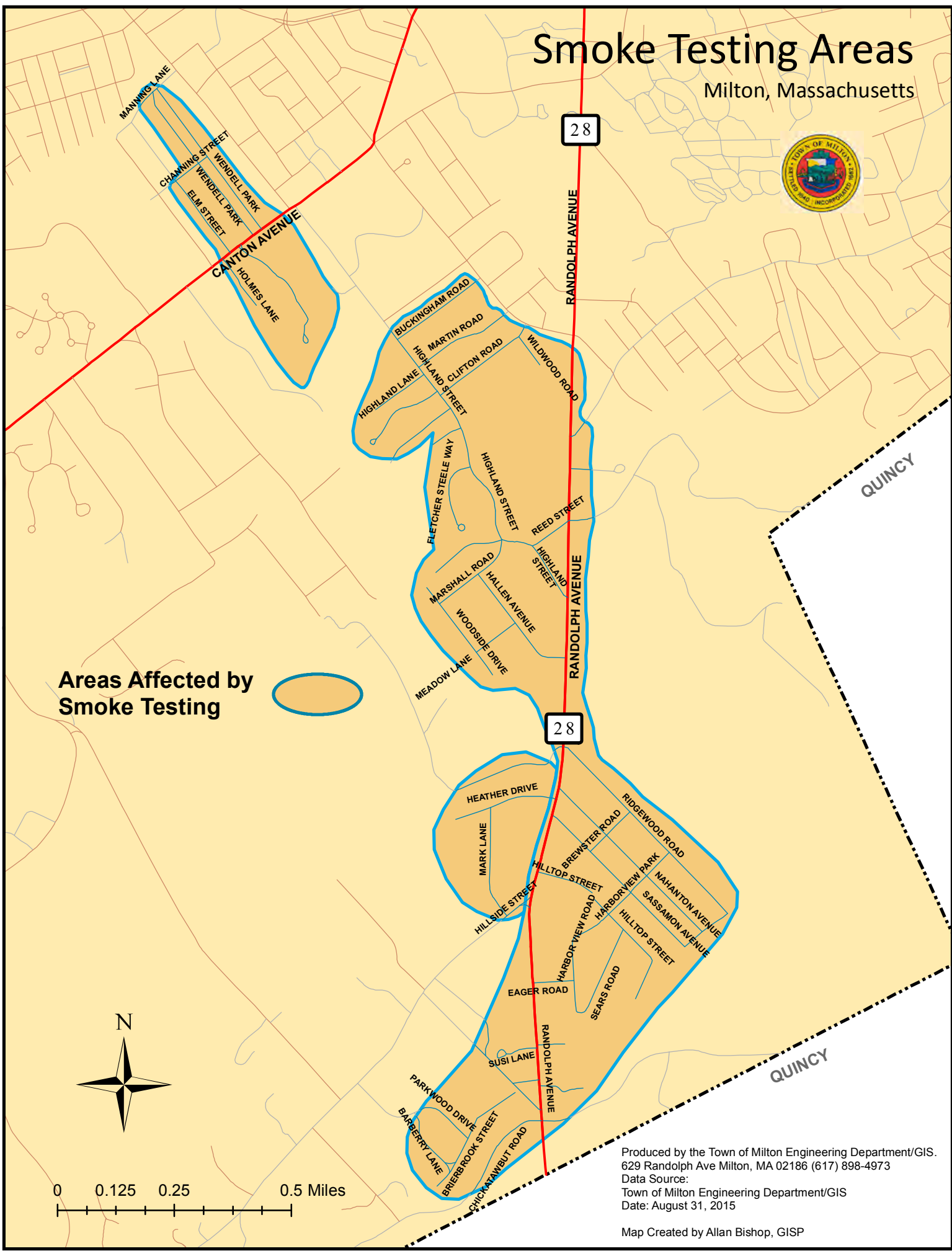
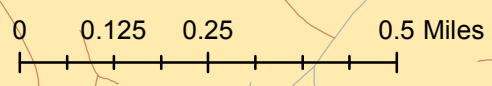


# Smoke Testing Areas

Milton, Massachusetts



**Areas Affected by  
Smoke Testing**



Produced by the Town of Milton Engineering Department/GIS.  
629 Randolph Ave Milton, MA 02186 (617) 898-4973  
Data Source:  
Town of Milton Engineering Department/GIS  
Date: August 31, 2015

Map Created by Allan Bishop, GISP